

# OUR OFFERINGS

DIFFERENT MODULES FOR DIFFERENT SOLAR PROJECTS



vikramsolar.com  
sales@vikramsolar.com (India & ROW)  
usa@vikramsolar.com (US)  
europe@vikramsolar.com (Europe)

+91 90070 18200  
Toll Free 1800 212 8200 (India)



## LOCATIONS

India: Kolkata | Gurugram | Chennai

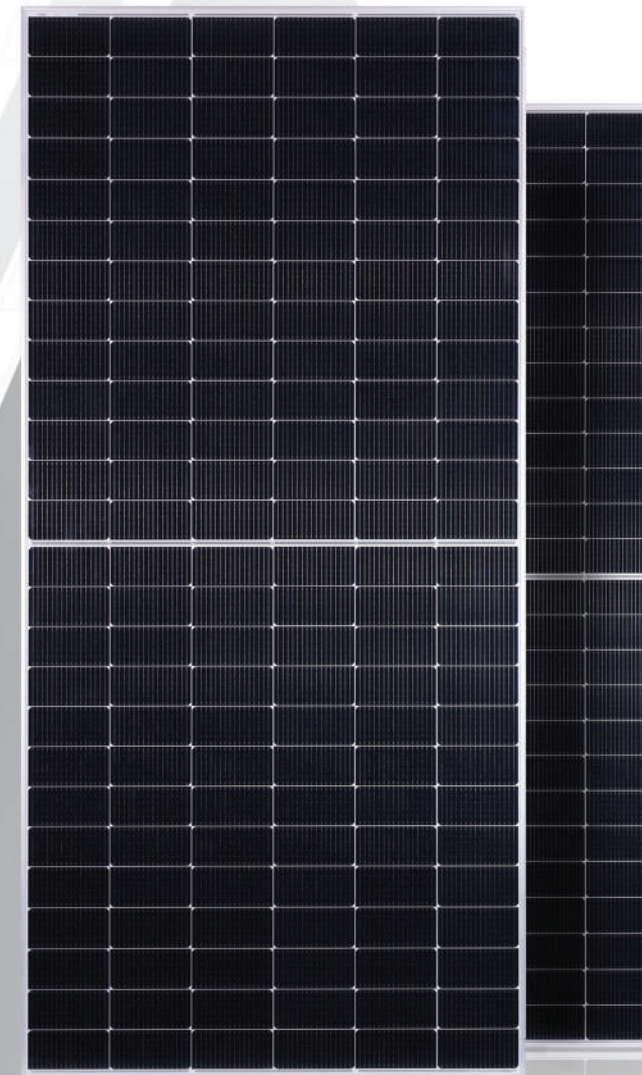
International: USA | Germany | China

Vikram Solar and all its accompanying logos are trademarks of Vikram Solar Limited registered in India

Vikram-Solar-Paradea\_Aug\_2025

# REIMAGINE ENERGY EXCELLENCE

**PARADEA**  
HIGH EFFICIENCY BI-FACIAL GLASS-GLASS PV MODULES



Maximum Efficiency %

**22.01**

Cell Type

**M10**

Wattage Up to

**610W**

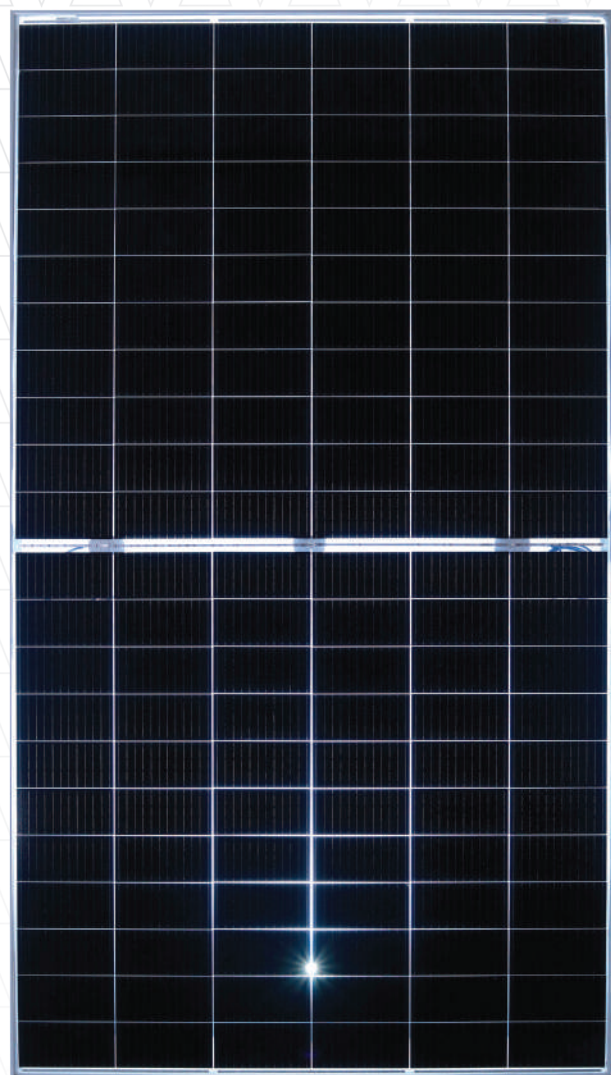
Cell Number

**156**



**Superior hail test performance**  
ø 45mm hail test passed from third party laboratory with impact velocity up to 27m/s  
Applicable with Glass (2mm) to Glass (2mm) Module and Glass (3.2mm) to Backsheet Module





# PARADEA

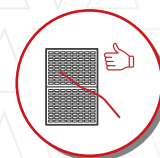
HIGH EFFICIENCY BI-FACIAL GLASS-GLASS PV MODULES

An amalgamation of endurance and agility, a fusion of quality and performance, a blend of balance and flexibility, the **M10 cell powered modules** are the **next level of performance**.



## HIGHER PERFORMANCE WARRANTY

About 11.11%\*#



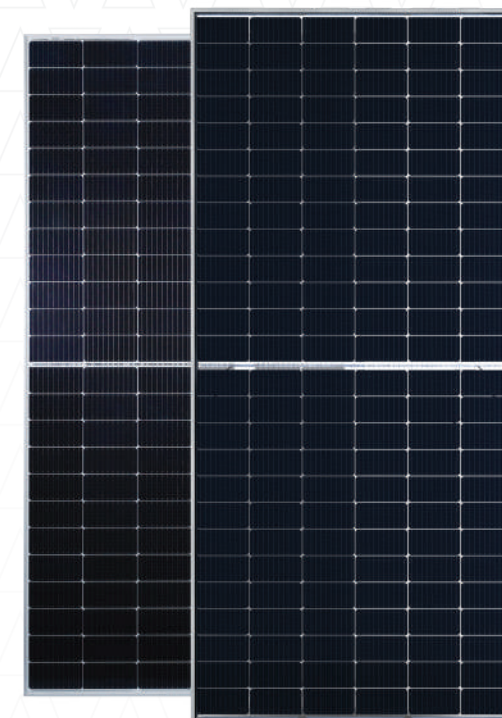
## 9.09% LESS ANNUAL DEGRADATION

Due to improved reliability and durability\*#

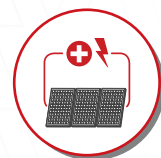


## IMPROVED SPACE UTILIZATION IN TRANSPORTATION

Reduction in frame width results to about 9.5% power increase per 40- feet typical container\*#

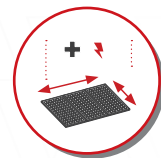


## BI-FACIAL GLASS-GLASS MODULE



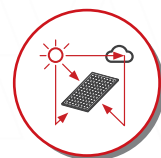
## MORE OUTPUT POWER PER STRING

About 20.45% more power is achievable for same string voltage\*#



## IMPROVED POWER GENERATION FOR A FIXED AREA

White mesh rear glass enhances more light absorption by utilizing non power generating areas\*#



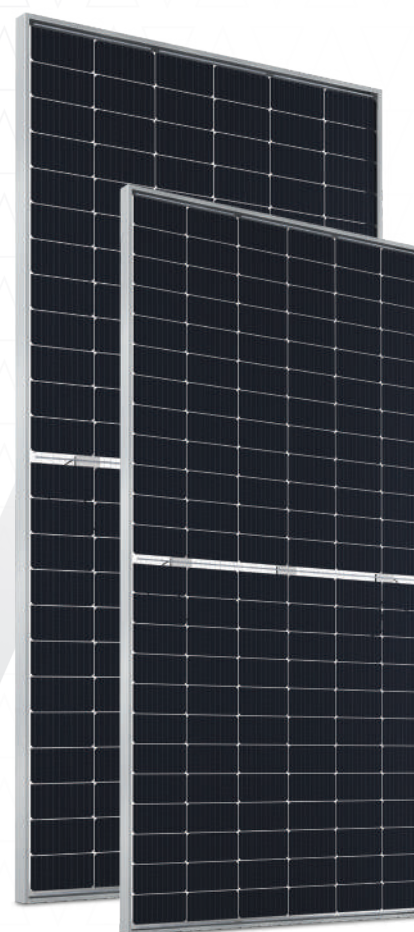
## BIFACIAL GAIN UP TO 25% IS ACHIEVABLE#

Depending on the albedo, mounting provisions, surface type and other factors



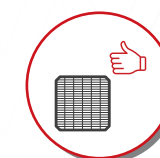
## OUTSTANDING RELIABILITY

With minimum exposure to corrosion from sand & salt mist with low risk from module warping & micro cracking



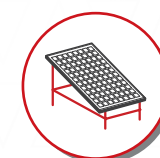
## IMPROVED MECHANICAL LOAD PERFORMANCE

Due to usage of toughened double-glass structure



## LOWER CELL CRACK

Reduced risk due to symmetric structure of glass on both sides allowing cells to bent only along the natural axis and not stretched



## EASY INSTALLATION

With ability to install vertically in east west direction

\* Advantages of M10 cell powered GG module over M6 cell powered GTB module, 144 cell variant. # Metrics mentioned here is as per internal calculations.