

OUR OFFERINGS

DIFFERENT MODULES FOR DIFFERENT SOLAR PROJECTS



vikramsolar.com
sales@vikramsolar.com (India & ROW)
usa@vikramsolar.com (US)
europe@vikramsolar.com (Europe)

+91 90070 18200
Toll Free 1800 212 8200 (India)



LOCATIONS

India: Kolkata | Gurugram | Chennai

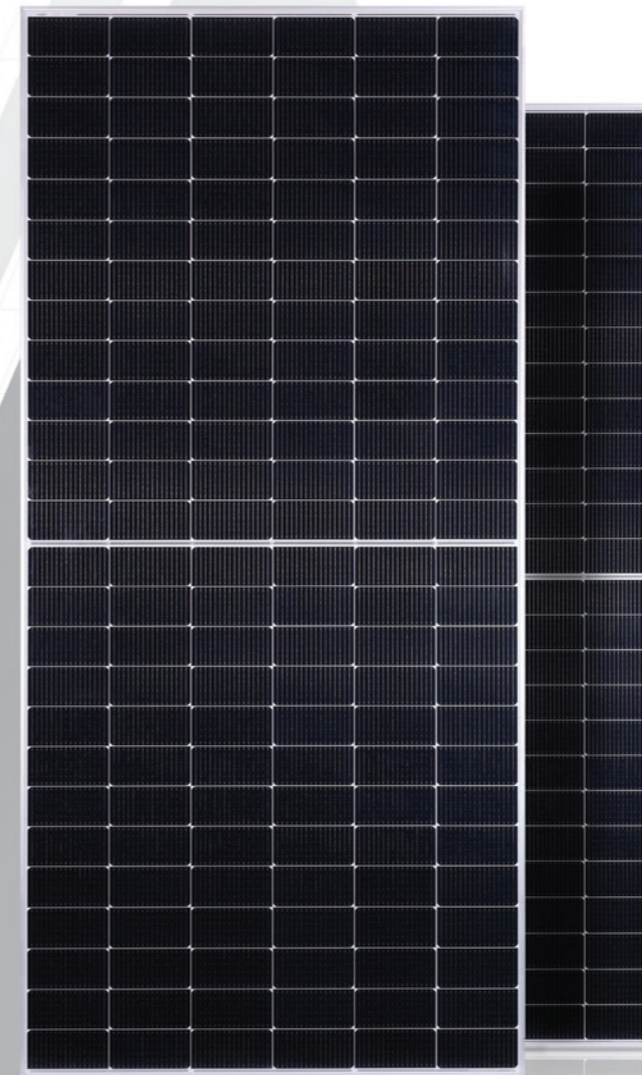
International: USA | Germany | China

Vikram Solar and all its accompanying logos are trademarks of Vikram Solar Limited registered in India

Vikram-Solar-Paradea_Mar_2025

REIMAGINE ENERGY EXCELLENCE

PARADEA
HIGH EFFICIENCY BI-FACIAL GLASS-GLASS PV MODULES



Maximum Efficiency %
22.01

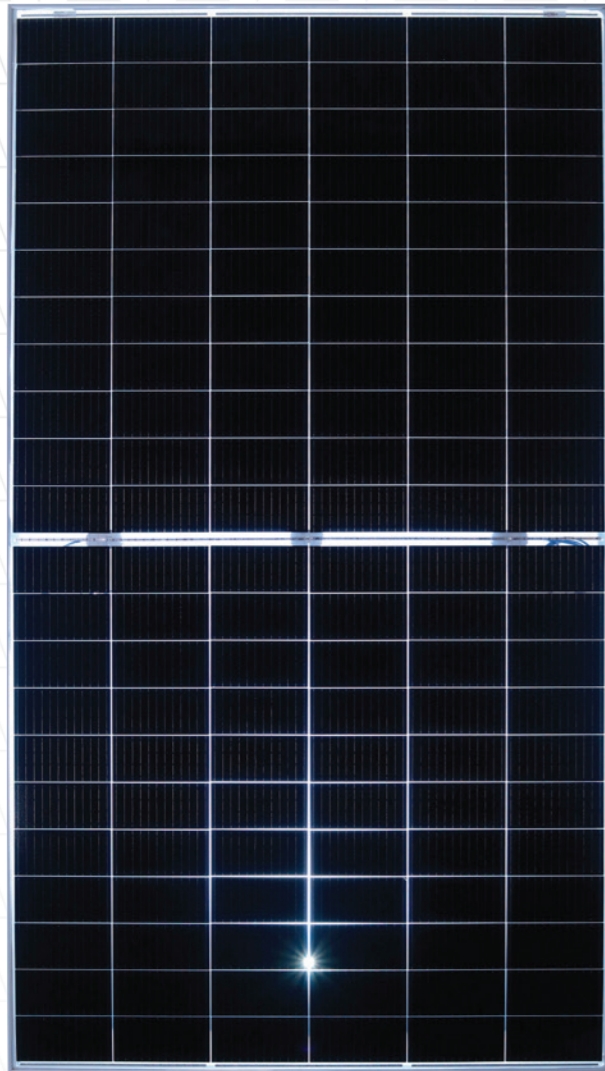
Cell Type
M10

Wattage Up to
610W

Cell Number
156



Superior hail test performance
ø 45mm hail test passed from third party laboratory with impact velocity up to 27m/s
Applicable with Glass (2mm) to Glass (2mm) Module and Glass (3,2mm) to Backsheet Module



PARADEA

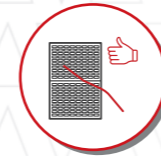
HIGH EFFICIENCY BI-FACIAL GLASS-GLASS PV MODULES

An amalgamation of endurance and agility, a fusion of quality and performance, a blend of balance and flexibility, the **M10 cell powered modules** are the **next level of performance**.



HIGHER PERFORMANCE WARRANTY

About 11.11%*#



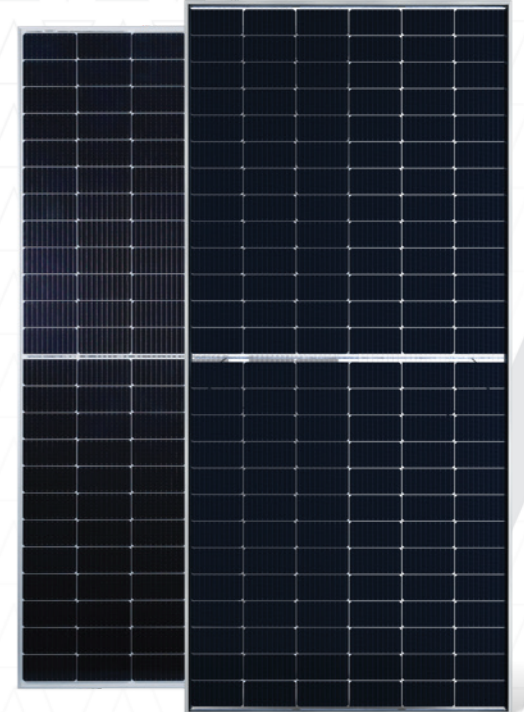
9.09% LESS ANNUAL DEGRADATION

Due to improved reliability and durability*#

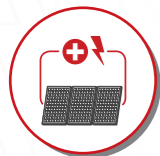


IMPROVED SPACE UTILIZATION IN TRANSPORTATION

Reduction in frame width results to about 9.5% power increase per 40- feet typical container*#

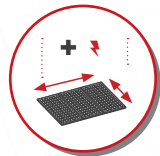


BI-FACIAL GLASS-GLASS MODULE



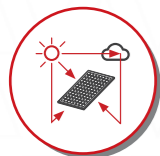
MORE OUTPUT POWER PER STRING

About 20.45% more power is achievable for same string voltage*#



IMPROVED POWER GENERATION FOR A FIXED AREA

White mesh rear glass enhances more light absorption by utilizing non power generating areas*#



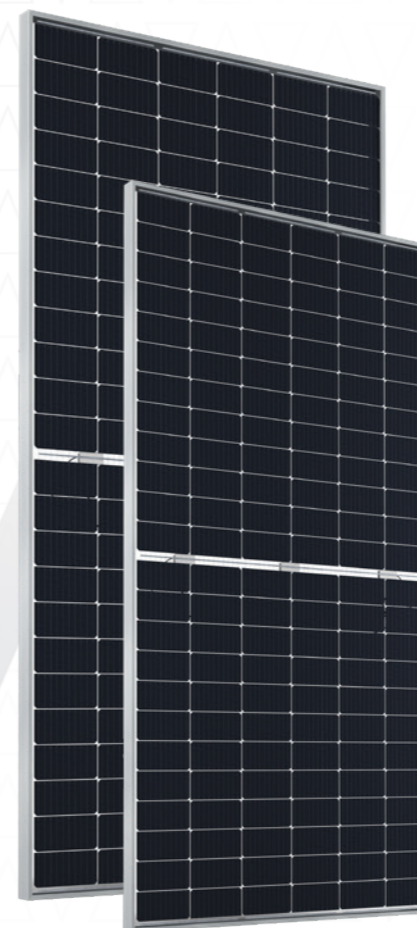
BIFACIAL GAIN UP TO 25% IS ACHIEVABLE#

Depending on the albedo, mounting provisions, surface type and other factors



OUTSTANDING RELIABILITY

With minimum exposure to corrosion from sand & salt mist with low risk from module warping & micro cracking



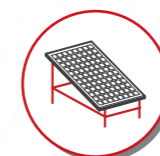
IMPROVED MECHANICAL LOAD PERFORMANCE

Due to usage of toughened double-glass structure



LOWER CELL CRACK

Reduced risk due to symmetric structure of glass on both sides allowing cells to bent only along the natural axis and not stretched



EASY INSTALLATION

With ability to install vertically in east west direction

* Advantages of M10 cell powered GG module over M6 cell powered GTB module, 144 cell variant. # Metrics mentioned here is as per internal calculations.